



WaterSmart Basics: Putting Your Green Plan Together

- About Citrus Heights Water District
- Services
 - Water-wise house calls
 - Rebates
- Raffle! B-hyve weather-based controller
 - Winner selected after each webinar
 - District to notify by phone or email



Rex Meurer
Water Efficiency Supervisor
waterefficiency@chwd.org
(916) 725-6873





WaterSmart Basics: Putting Your Green Plan Together

Cheryl Buckwalter
Landscape Liaisons

landscapeliaisons@gmail.com

916-207-8787

CLIA, QWEL, Landscape Designer,
Consultant, & Educator

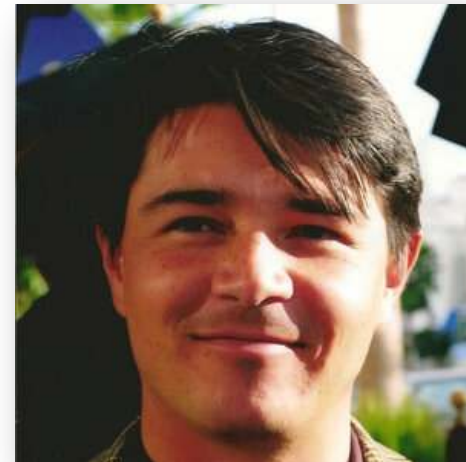


Martin Carrion van Rijn
Landscape Symphonies

www.landscapesymphonies.com

530-632-3263

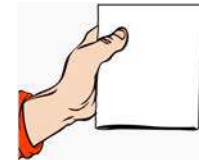
C-27 Landscape Contractor
QWEL, WWLP, EcoLandscape
Landscape Designer & Contractor





Putting Your Green Plan Together

- Presentations & Handouts Available Monday, June 15th
 - <http://chwd.org/our-water/events/>
- Part 1 - June 9th webinar's recap
- Part 2 – June 11th Topics
 - Landscape ‘Styles’
 - On-site Water Management Strategies
 - Hardscape – Non-water Consuming Materials
 - Softscape – Selecting, Spacing & Placing Plants
 - Color, Features & Structures, & Details
 - Design & Plant Resources, Questions

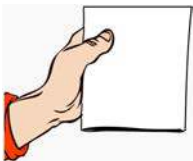
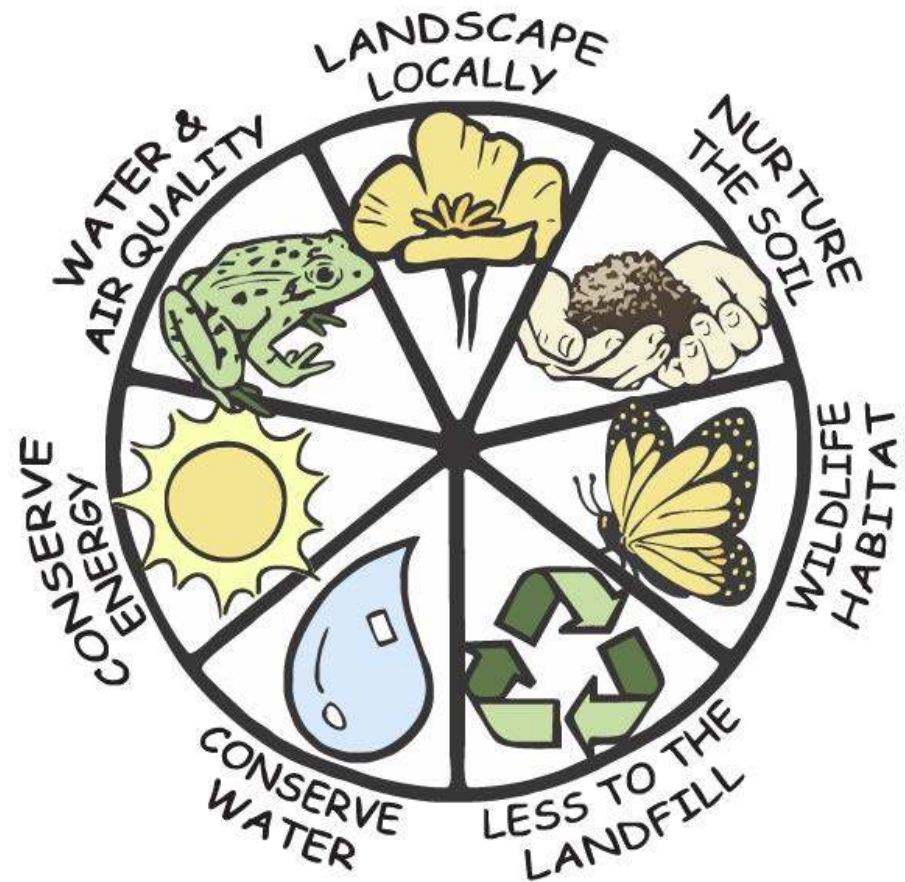




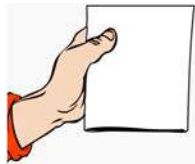
Principles of River-Friendly Landscaping

Consider how to use each RFL Principle during

- Designing process
- Installation
- Maintenance



Handout online
after webinar



Handout online
after webinar

1) Determine Intended Use and Audience:

- Shared Spaces
- Private Areas
- Functional Areas

2) Define Universal Aesthetics:

- Balance
- Focalization of Interest
- Simplicity
- Rhythm
- Proportion
- Unity

3) Integrate Personal Aesthetic:

- Style
- Hobbies
- Entertainment
- Family Structure
- Attitude to the Outdoors
- Habits
- Materials Preferences
- Use of Outdoor Space

4) Consider Cultural Requirements:

- Zoning
- Homeowners Associations
- Easements
- Setbacks
- Historical Areas

5) Integrate Existing and New Materials:

- Integrate Hardscape Considerations
- Integrate Softscape Considerations

In this document, we briefly present what is required to design, install and maintain a proper landscape. A proper landscape is a space custom-tailored to your way of life: that takes into consideration not only your aesthetic tastes and practical needs but the potential of the site. A proper landscape will grow with you, will be sustainable, will be environmentally conscious, and will require less maintenance, which ensures your enjoyment and the landscape's maximum potential.

While we encourage you to boldly step into designing your own landscape, let us know if we can help.

Connect with us to see how experts put these considerations into practice.

**Call Martin at
(530) 632- 3263**

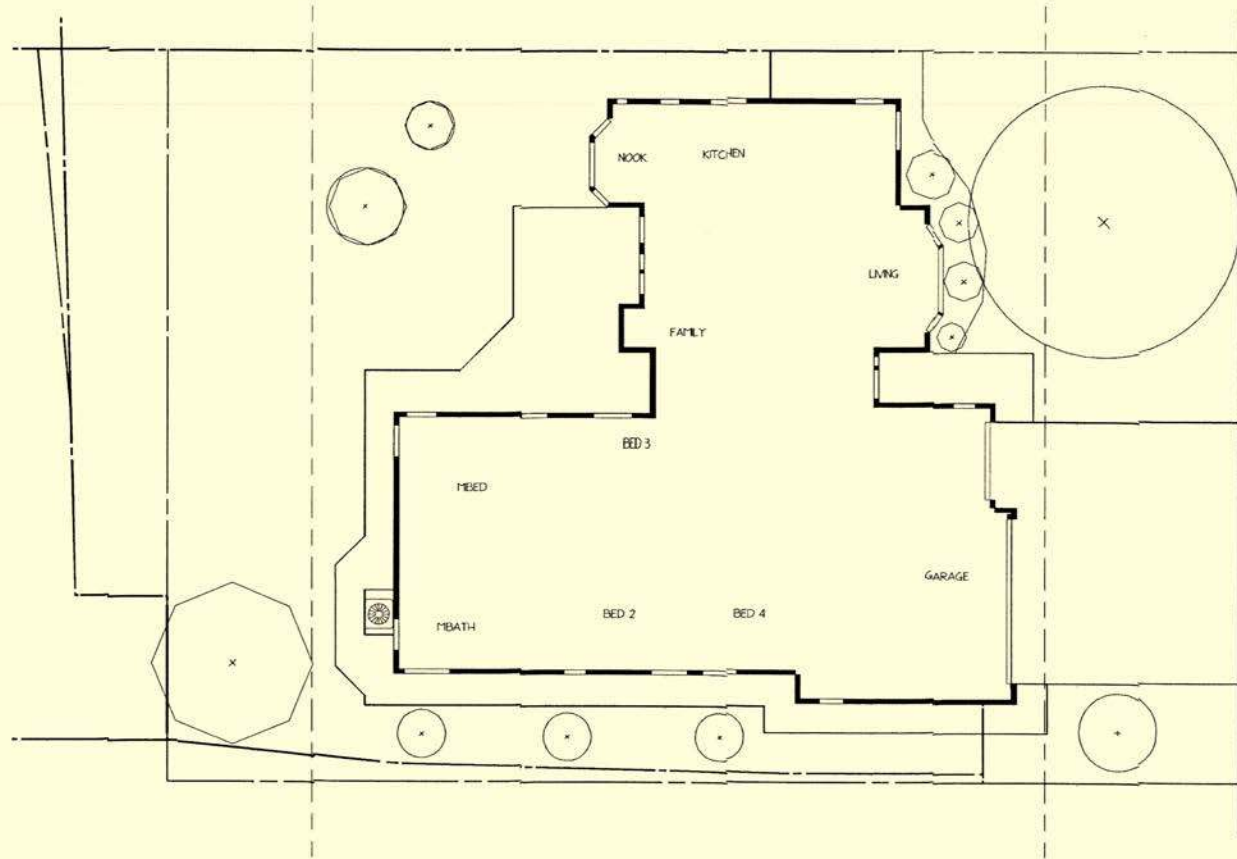


(530) 632-3263

martin@landscapesymphonies.com



Base Plan





Landscape “Styles”

- Formal
 - Contemporary (Modern)
 - Mediterranean
 - Southwestern (Desert)
 - Asian or Japanese
 - California Casual
-
- Any “style” can be created for any size landscape
 - Any style is possible using California native & climate-appropriate plants
 - Learn about plants, select right forms & shapes along with right placement & care



Formal Style



Myrtus communis 'Compacta'
Dwarf Myrtle



- Any landscape style is possible with natives
 - Function of knowing what plants are available and how to use them
- Formal

Style Renderings Courtesy of
Greg Rubin & Lucy Warren
California's Own Native Landscape
Design, Inc.

Geijera parviflora
Australian Willow





Contemporary Style



Yucca filamentosa
Adam's Needle



Styles

- Any landscape style is possible with natives
 - Function of knowing what plants are available and how to use them
- Formal
- Contemporary
- Mediterranean

Copyright 2016 © California's Own Native
Landscape Design

Mediterranean Style



Frangula (Rhamnus) californica
Coffeeberry



Lavatera maritima
Tree Mallow

Ceanothus 'Joyce
Coulter'
Joyce Coulter
Ceanothus

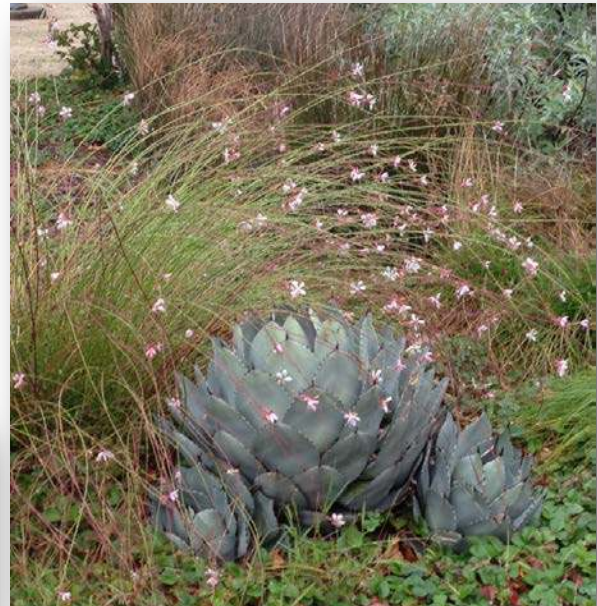
Styles

- Any landscape style is possible with natives
 - Function of knowing what plants are available and how to use them
- Formal
- Contemporary
- Mediterranean
- Southwestern

Copyright 2016 © California's Own Native
Landscape Design

11

Southwestern Style



Gaura lindheimeri
Lindheimer's Beeblossom
& Agave



Styles

- Any landscape style is possible with natives
 - Function of knowing what plants are available and how to use them
- Formal
- Contemporary
- Mediterranean
- Southwestern
- even Japanese!

Asian or Japanese Style



Heuchera
Coral Bells



Iris 'Canyon Snow'
Canyon Snow Pacific Iris



California Casual



Phyla (Lippia) nodiflora,
Kurapia, used as lawn
substitute



On-site Water Management Catchment, Swales, & Berms

- Shaping the Soil
 - Shallow depressions & contours that slow & capture rain from roofs, pavement, irrigation (overspray)
- Benefits:
 - Allows water to slowly soak into soil instead of running off into drainage system
 - Creates added interest by shaping the soil, rather than flat or sloped
 - Provides habitat for birds, butterflies, beneficial insects





Swales, Contours, & Berms





Rain Gardens



Designer: Martin Carrion
Landscape Symphonies



Slopes Terraces & Walls





Slopes Groundcover Plants

- Use low water-use groundcovers on inaccessible slopes
- Avoid erosion, stabilize soil
- Lower water-use plants at top of slopes - higher water-use at bottom



Groundcovers
Coprosma x kirkii
Creeping Mirror Plant



Hardscape *Permeable, Porous, Pervious*

- Remember Objectives: Slow, Spread, & Sink



Photo courtesy of Reading Rock
Building Materials and Services

Hardscape

Reduce “Connected” Areas

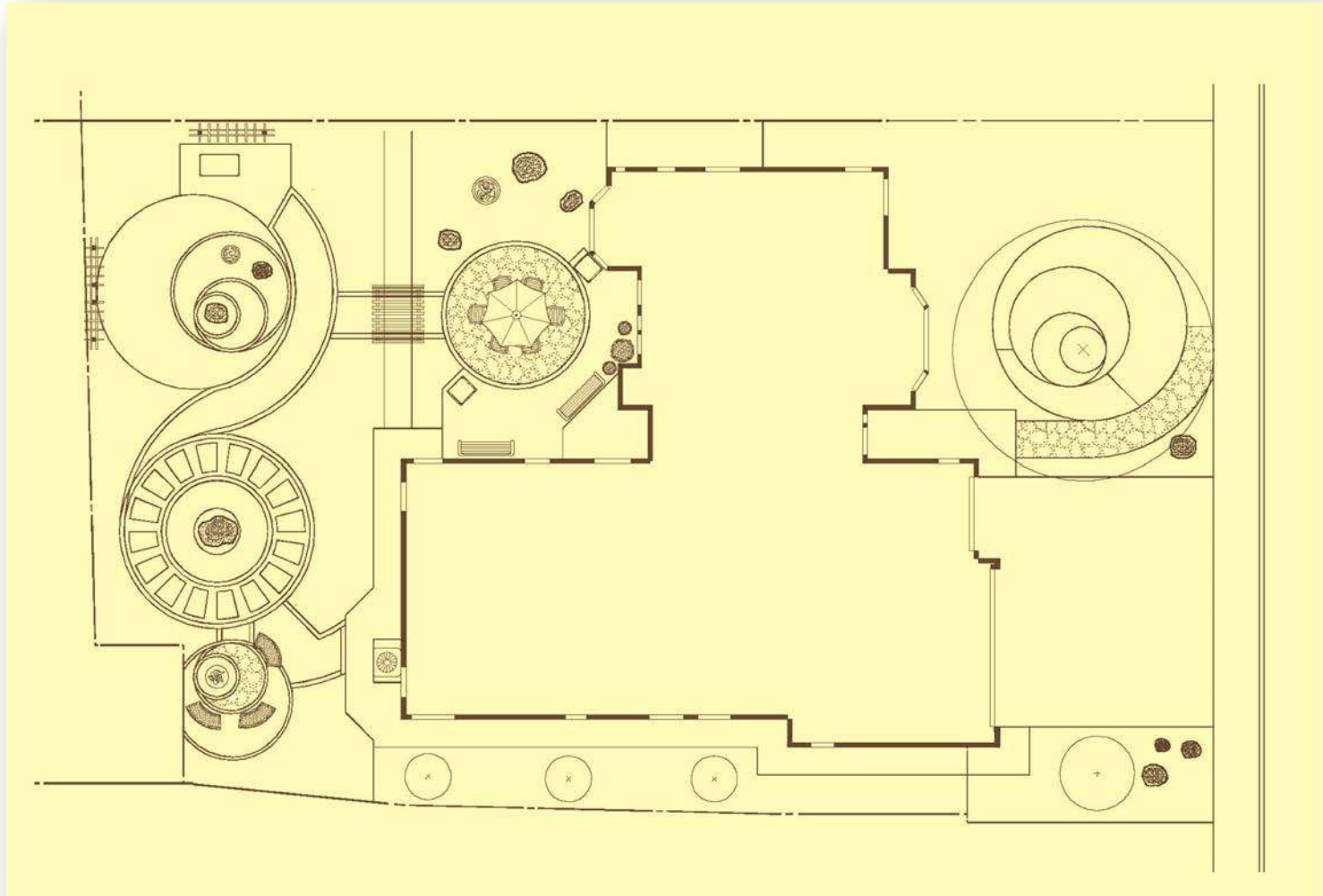


- Reduce solid driveway to paving strips for wheels, permeable materials
- Shorten length of driveway
- Consider need for wheel chair accessibility & ADA compliance





Hardscape Flow & Use





Hardscape Flow & Use



Hardscape Access, Patios





Create Shapes & Retain Materials with Edging

EDGING



Composite Edging



Metal Edging



Create Shapes & Retain Materials with Edging





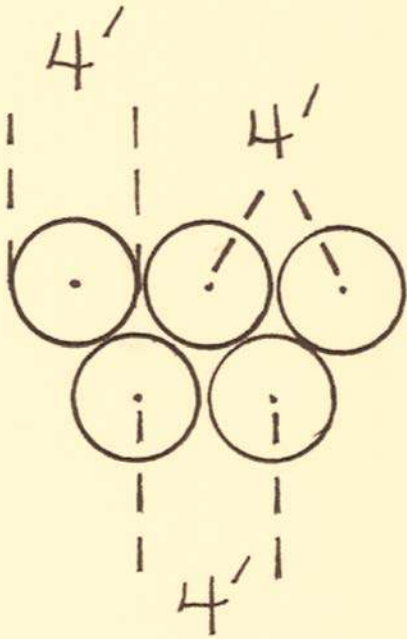
Softscape

Softscape - Living, water-consuming materials

- Give plants room to grow to maturity
- Draw in at full size



Spacing Plants



- Mature size of plant = 4 ft. wide
- Install plants 4 ft. apart on center (O.C. = from center of one plant to center of next plant)
- Line of sight at corners





Plant Function & Type

- Function
 - Anchor plants
 - Foundation
 - Backdrop
 - Accent
- Layer
 - Illusion of space beyond
 - Density & multi-level interest
 - Habitat for wildlife
- Type
 - Tree, shrub, groundcover, perennial, annual



Regional Water Authority Water-Smart Garden Makeover Contest

Water-use Categories of Plants



High
Moderate
Low
Very Low
None



Note: Once Established





Low-Water Use & Drought-Tolerant – *Not Equal*

Drought Tolerant - **Once established** = Plants can survive (not necessarily thrive) on:

- Seasonal rainfall
- Infrequent watering, or
- Repeated periods of dry conditions & recover from repeated wilting

Low Water-Use Plants:

- A constant classification
- Plants that always require less water than other classifications
- Less water to supplement rain





Use Highly-efficient Irrigation Strategies

- Separate valves (when possible) for
 - Trees
 - Lawn
 - Edibles, fruit trees, etc.
 - Potted plants
 - Mature plants being kept
 - Plants that rely on seasonal rainfall & little, if any, supplemental water (once established)



Hydrozoning



Selecting Plants

- Plants from Mediterranean-type climates - Cool, wet winters & warm, dry summers
- Local California natives
- Plant palette = 70% natives / 30% non-native
- Use botanical names (not common) when selecting & purchasing





Characteristics of Drought-Tolerant & Many Low-Water Use Plants



Stachys byzantina
Lamb's Ear



Salvia (Rosmarinus) officinalis
Rosemary



Salvia apiana
California White Sage

Leaves - Retain moisture, color reduces sun exposure, "hairs", waxy surface, leathery, tiny, thick, leaf orientation

Roots – Deep taproot, fibrous



Sun (Solar) Categories for Plants

Think of *Natural* Settings

- Full Sun – 10 hours or more, thrive under toughest conditions
- Sun to Part Shade – 5 to 10 hours direct sun
- Part Shade – Less than 5 hours of direct sun, shade for half the day, especially in the afternoon
- Shade – Less than 1 hour of direct sun, may take dappled sun



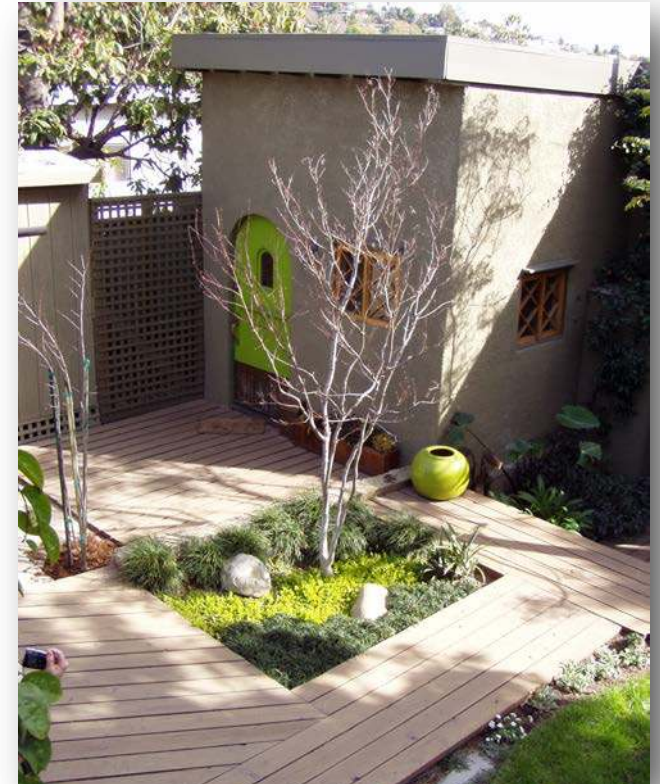


Plant Color & Characteristics





Coordinate & Repeat Colors





Invasive Plants



DO NOT PLANT
Stipa tenuissima
Mexican Feather Grass

👍 YES, PLANT
Aristida purpurea
Purple Three-awn
Photo:
Calscape.org



👍 YES, PLANT
Bouteloua gracilis 'Blonde Ambition'
Blond Ambition Blue Grama Grass



Include Mulch in Your Plan

What is it ~ Why Use It



NOT THIS 🙄

- Any material spread over the soil surface
- Select organic mulch to enhance the growth of plants & landscape appearance
- Leave area of soil without no mulch for bee habitat
- Let leaves stay where they fall



Use THIS 👍

Features & Structures



Redwood Arbor

Provide

- Shade & color
- Area for relaxation
- Support for plants
- Attached or free standing



Awning over Deck



Fencing

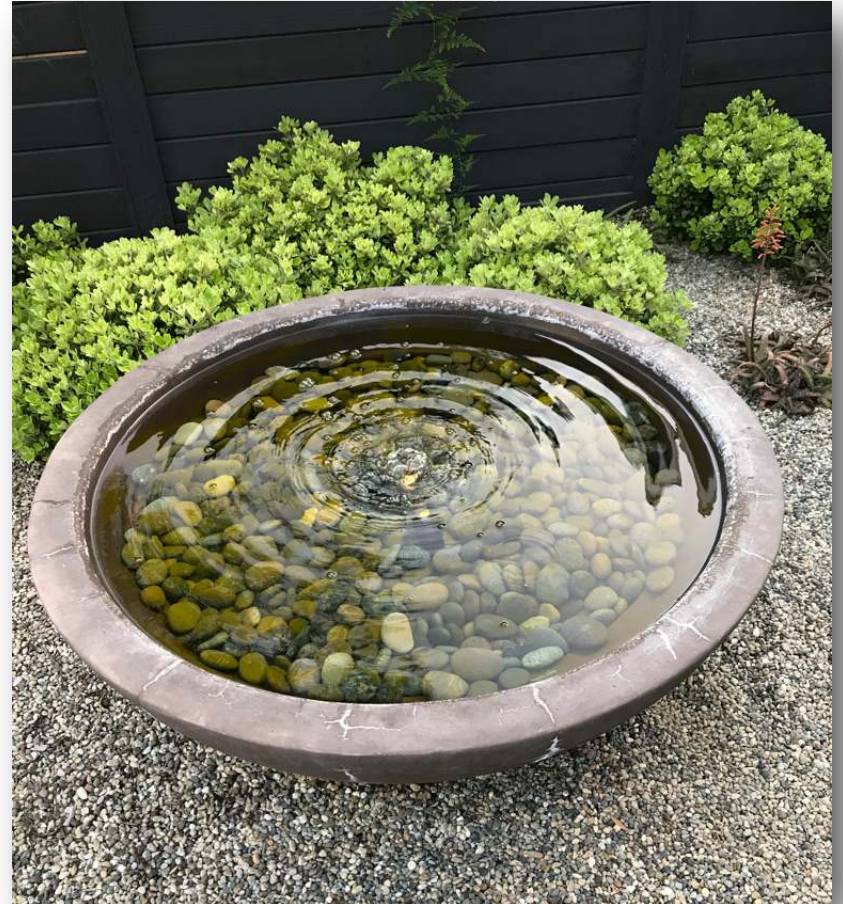


Check building codes & setback requirements

Water Features



- Re-circulating pump (requires electricity)
- Solar powered
- Muffles sounds
- Gives cooling effect
- Provides water source for birds, bees...





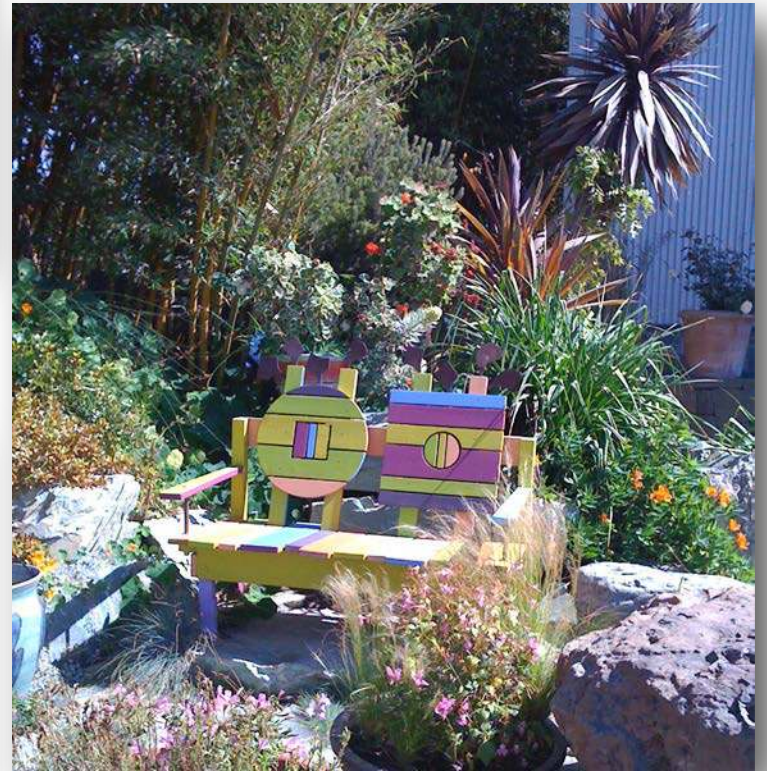
Landscape Lighting



- Light for a reason & on target
 - Entries
 - Steps/stairs
 - Entertaining areas
- Use dimmers, motion sensors, timers
- Negative impacts
 - Increases energy consumption
 - Disrupts the ecosystem & wildlife
 - Effects crime & safety



Details





Containers

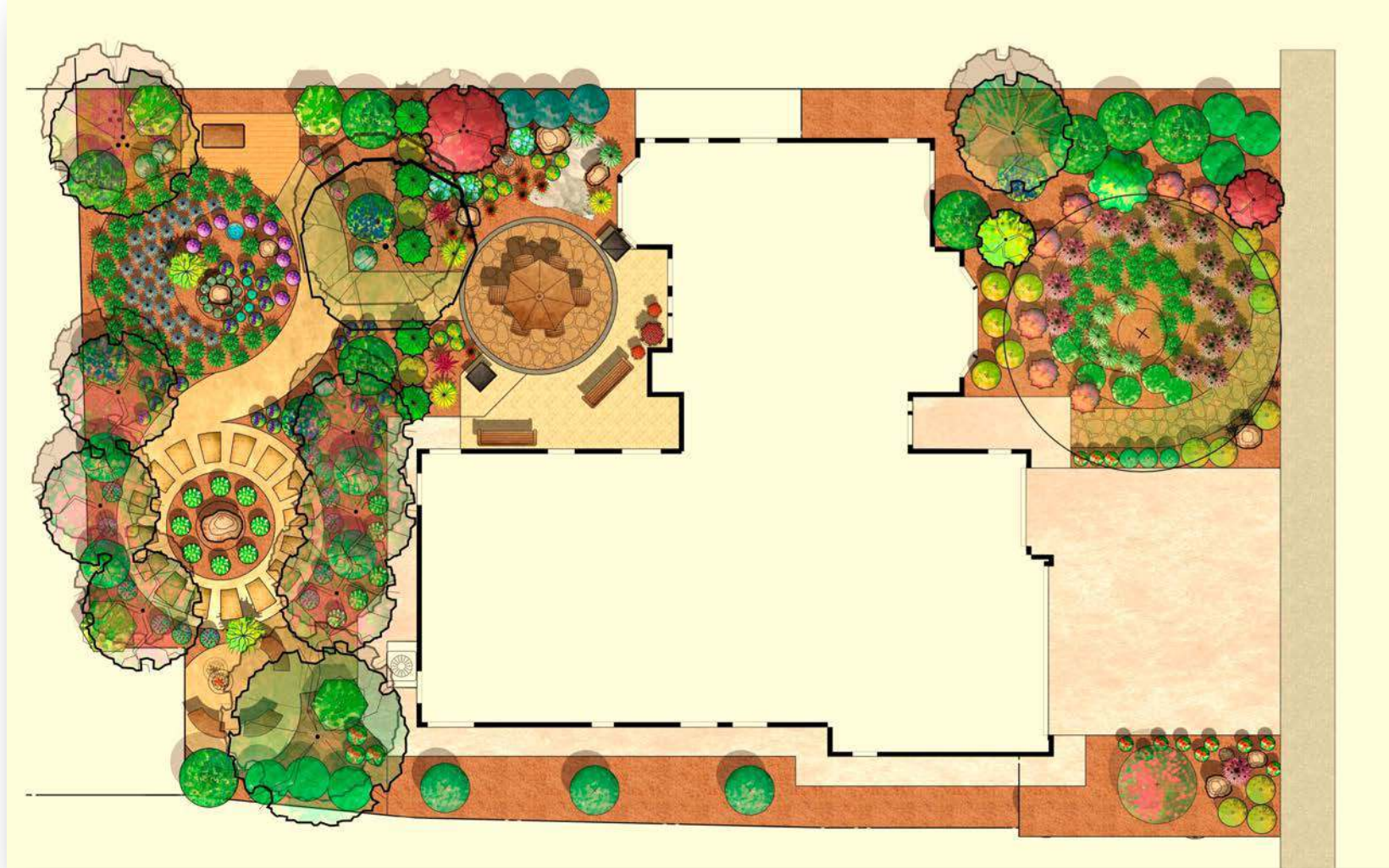
Same color, various shapes, adds interest & unifies



Use to accent / complement
Plants, hardscape...
Designer & Contractor
Gary Kernick, Change of Seasons



Final Plan





From Un-used Space to Multi-use, Water-efficient Landscape



Design & Installation
Martin Carrion van Rijn
Landscape Symphonies





Water-Wise Gardening in the Gold Country Region



Find Your Water Provider
Want to contact your water provider about great rebates and programs?

Water Saving Tip:
Mulching and adding compost to soil can minimize evaporation and help soil absorb and store water.



Design Resources BeWaterSmart.info

A Homeowner's Guide to a WaterSmart Landscape



HOME ABOUT HOW DO I FIND? Search...

Be WATER SMART
Regional Water Authority

DWR's Toilet and Turf Replacement Program

Rethink Your Yard

Sacramento-area residents did an outstanding job conserving water during California's historic drought. A big reason was their willingness to limit outdoor watering, which is where most household water use occurs.

For many people, the drought gave them an opportunity to rethink the way they view and use their landscape and to consider whether it's time for a change.

Check out the stories below of those who decided to rethink their yards—and the benefits they found by moving from a thirsty landscape to a beautiful, low-water use lifestyle.

#RETHINK YOUR YARD
INSPIRED NEIGHBORS TO CONSERVE

BeWaterSmart.info

MAUREEN & RICH
FOLLOW

Find Your Water Provider
Not sure which district is your water provider?

Search Here

Save Our WATER

Learn more about California's Dry Conditions at saveourh2o.org

Welcome to the Sacramento Region Smart Irrigation Scheduler
BASED ON CURRENT WEATHER



S

CalScape.org

Enter a California address or click the map

6230 Sylvan Rd., Citrus Heights, Ca

357 plants native to 38.6793,-121.2899 (6230 Sylvan Rd., Citrus Heights, CA)



All Plants
357



Trees
19



Shrubs
40



Annuals
163



Grasses
49



Succulents
3



Ferns
12



Sun
185



Shade
26



Groundcovers
23



Butterfly Hosts
274



Hedges
20

Plant Description



Plant Type
Shrub



Size
3.9 - 5 ft tall
5 ft wide



Form
Mounding,
Spreading



Growth Rate
Moderate



Fragrance
None



Flower Color
Orange, Yellow



Flowering Season
Winter, Spring,
Summer

Wildlife Supported

Hummingbirds, insects



Butterflies & moths hosted (1 [confirmed](#) ✓, 7 [likely](#) *) [SHOW ALL](#)



Variable Checkerspot
*
Euphydryas
chalcedona



Common Buckeye
*
Junonia
coenia



Mylitta Crescent
*
Phyciodes
mylitta



Landscaping Information



Sun
Part Shade, Full
Sun



Moisture
Very Low



Summer Irrigation
Max 2x / month
once established



Nurseries
Carried by 50



Soil Drainage
Fast, Medium



Soil Description
Tolerant of difficult soils if adequate drainage is provided. Tolerates Serpentine Soil. Soil PH: 5.0 - 8.0

Bank Stabilization

16

Eco-Friendly Landscape Design Plans for The New California Landscape



FREE Four Complete Landscape & Irrigation Plans

- 75 Plant Profiles
- Irrigation Equipment
- Guided Verbal Tours of Plans
- **Interactive Designs:** See plants, features, & learn about water-saving irrigation equipment and practices

Visit Download Learn

Design & Plant Resources



SACRAMENTO COUNTY



EcoLandscape® CALIFORNIA
Ecolandscape.org

RIGHT AS RAIN 1

- Rain garden
- Ultra sustainable
- Stormwater management
- Resource efficient



NEAT AND PETITE 2

- Small scale landscape
- Emphasis on recycled materials



SHOW ME MORE

WHOLE SOME HABITAT 3

- Worthy of Natural Wildlife Federation designation — Provides water, shelter, food & hiding spots for wildlife
- Family-friendly habitat
- Water feature
- Edible garden
- Composting, recycling



RECREATION DESTINATION 4

- Sophisticated
- Perfect for entertaining & parties
- Recreation / horsehoe pit
- Carefree landscape



Eco-Friendly Landscape Design Plans for The New California Landscape

- Drought-tolerant
- Low water-use
- Easy care
- Low maintenance
- Save money, reduce pollution & waste

How can I participate?

Click on one of the landscapes above to learn

Tell me more!

FREE For Sacramento region residents

puddle-stompers.com/waterwonk/new-ca/

Botanical Name: *Rosmarinus officinalis* 'Mozart'
Common Name: Mozart Rosemary

Rowz-mah-RHI-nuhs oh-fih-sih-NAHL-us

SHRUB



Spring



Summer



Fall



Winter

Family: Lamiaceae
Origin: Mediterranean region
Climate Zone: USDA 7-10, Sunset 4-24
Mature Height: 1½ - 2 feet
Mature Width: 4-6 feet
Plant Type: Evergreen
Growth Habit: Multi-branched, compact, mounded
Growth Rate: Fast

Soil: Adaptable, with good drainage
Exposure: Full sun to light shade
Water Requirements: Low, drought tolerant
WUCOLS Water Needs: L L L L M M
Description: Outstanding evergreen shrub, has darkest purple flowers of all rosemary plants, tough and versatile. For nearly continuous color in the garden, plant with Rockrose and Lavenders.



WaterSmart Plant List for the Sacramento Region

New additions

- Common names link to online photos
- Plants tolerant of recycled water
- Fire-resistant plants
- More California native plants
- Roseville.ca.us/plantlist



WaterSmart Plant List for the Sacramento Region
Very Low, Low, and Moderate Water-Use
Perennials

Genus	Species	Variety / Cultivar / Hybrid	Common Name	Water Use	Plant Type	Sun Exposure	Climate Zone	Mature Size Tall (T) / Wide (W)	Plant Coverage Value (Sq. Ft.)	Bloom Color / Season							
Perennials											Uses / Benefits						
Click on Name for Online Photos																	
Achillea	filipendulina		Fernleaf Yarrow	L	Evergreen to Semi-evergreen	FS	A1-A3, 1-24	4-5' T / 1-3' W	3	Yellow / Spring-Fall	Y		Y	Y		Y	Y
Achillea		hybrids	Yarrow	L	Semi-evergreen	FS/PS	1 to 24	1-2' T / 1-3' W	3	Yellow, Pink, Red, White, Lavender, Salmon / Spring, Summer, Fall	Y		Y	Y		Y	Y
Achillea	millefolium	'Island Pink'	Island Pink Yarrow	L	Semi-evergreen	FS/PS	1 to 24	1-2' T / 1-3' W	3	Pink / Spring, Summer, Fall	Y	Y	Y	Y		Y	Y



Today's Landscape is...



- Functional
- Maintainable
- Environmentally Sound
- Resource Efficient
- Cost Effective
- Visually Pleasing
- AND
- River-Friendly



Illustrated By Kathryn Wipe



Questions & What's Next... Fall Workshops

Cheryl Buckwalter
Landscape Liaisons

landscapeliaisons@gmail.com

916-207-8787

Martin Carrion van Rijn
Landscape Symphonies

landscapesymphonies.com

530-632-3263



Sylvan Ranch Community Garden

All Rights Reserved