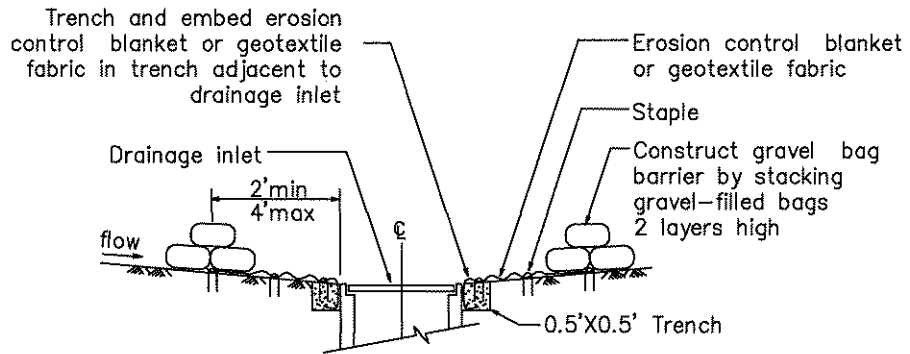


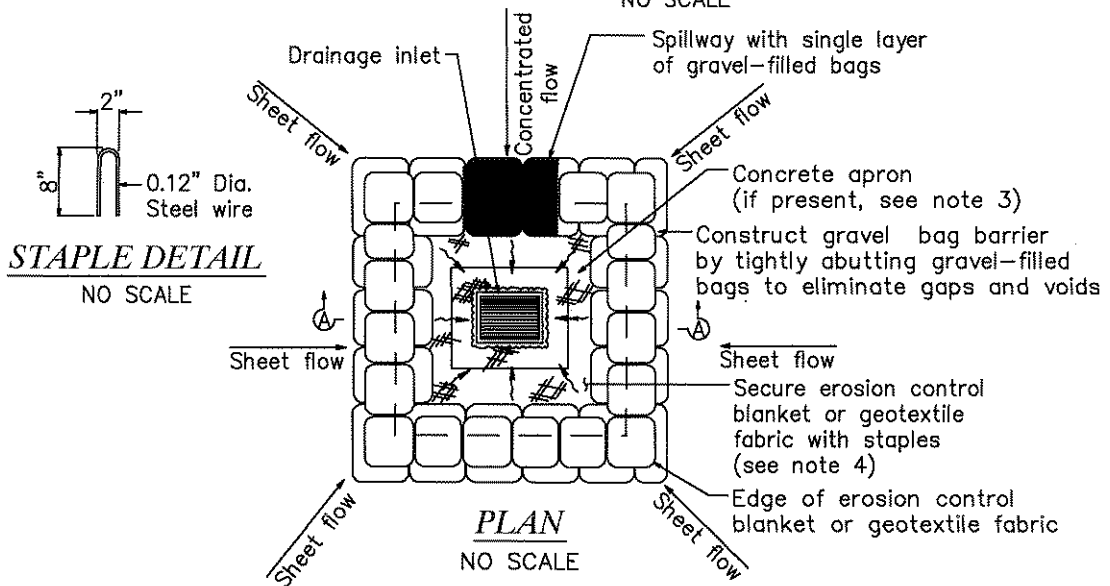
NOTES:

1. Dimensions may vary to fit field conditions.
2. Install a minimum of 3 gravel bag barriers upstream of each drainage inlet to be protected.
3. Position erosion control blanket or geotextile fabric at edge of concrete apron and secure in trench.
4. Erosion control blanket/geotextile fabric is not required if the area adjacent to the drainage inlet is vegetated or paved.



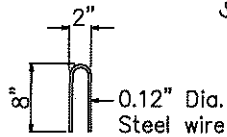
**SECTION A-A**

NO SCALE



**PLAN**

NO SCALE



**STAPLE DETAIL**

NO SCALE

**STORM DRAIN INLET PROTECTION  
AREA INLET INSTALLATION**

**CITRUS HEIGHTS WATER DISTRICT**

APPROVED BY: *Robert A. Smith*  
CITRUS HEIGHTS WATER DISTRICT

DATE: 4/13/2009

DRAWN: 13 APR 2009  
REVISED: NONE  
SCALE: N.T.S.  
DESIGN: P.A.D.  
CAD FILE: SWPPP\_103.DWG

PAGE: **SWPPP\_103**



**CITRUS  
HEIGHTS  
WATER  
DISTRICT**